

No. 6206S2L

2-point clamping station

Pneumatic unlocking.
 Opening operating pressure:
 K10.3 min. 5 bar.
 K20.3 min. 4.5 bar.
 Steel, unhardened.
 Repeat accuracy < 0.005 mm.

Order no.	Size	Pull-in/locking force up to	Holding force*	Weight
		[kN]	[kN]	[Kg]
550249	K10.3	2 x 10	2 x 25	13
550254	K20.3	2 x 17	2 x 55	24

Design:

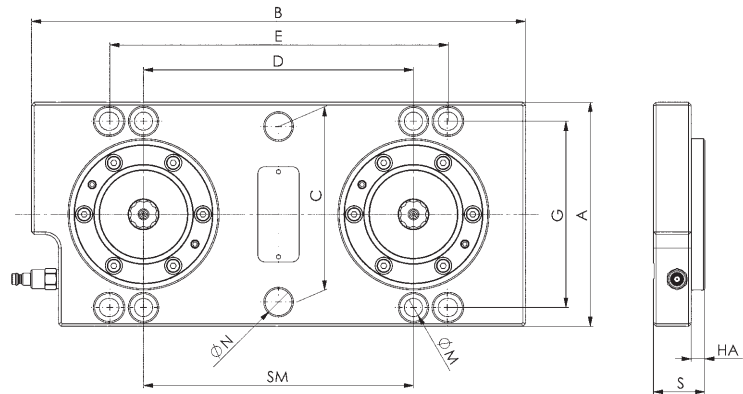
Pneumatic clamping station for setting time-optimised clamping on machine tables with groove spacing of 63, 100 and 125 mm. Fastening is via M12 socket head screws. At least two fitting bores are attached for alignment.
 The insertion dimension of the clamping modules is 200 mm.
 The pneumatic quick-coupler is premounted.

Advantage:

- Low overall height

Note:

* Please observe the installation instructions.



Dimensions:

Order no.	Size	A	B	C	D	E	G	HA	dia. N	dia. M	S	SM
550249	K10.3	166	366	133	200	250 - 252	138	10	20	13,5	38	200
550254	K20.3	196	366	160	200	250 - 252	165	15	20	13,5	53	200

CAD



Subject to technical alterations.