



General-use pressure gauge G49D/G59D Series

● Port size: R1/8, R1/4

JIS symbol



Specifications

Descriptions	G49D	G59D
Working fluid	Liquid or gas (non-corrosive)	
Fluid temperature °C	5 (41°F) to 60 (140°F)	
Ambient temperature °C	5 (41°F) to 60 (140°F)	
Accuracy *1	Full scale ±3%	
Shape	DT type (rear side screw, stock section square)	
Display size	φ42	φ52
Material	Stock/Bourdon tube	Copper alloy *2
	Housing	Steel plate + chrome plating
	Lens	Glass
Pressure range MPa	0 (≈0 psi, 0 bar) to 0.2 (≈29 psi, 2 bar)	
	0 (≈0 psi, 0 bar) to 0.4 (≈58 psi, 4 bar)	
	0 (≈0 psi, 0 bar) to 1.0 (≈150 psi, 10 bar)	
	0 (≈0 psi, 0 bar) to 2.0 (≈290 psi, 20 bar)	
Port size	R	1/8, 1/4
Weight	g	86 115

*1: The guaranteed indicator accuracy temperature is 20±15°C.

*2: The material of the Bourdon tube is phosphor bronze only for pressure indication "P20."

Clean-room specifications (Catalog No. CB-033SA)

● Anti-dust generation structure for use in cleanrooms

G49D - - **P9***

G59D - - **P9***

Copper and PTFE free specifications (Page 246)

G49D - - **P6**

G59D - - **P6**

Specifications for rechargeable battery

(Catalog No. CC-1226A)

● Design compatible with rechargeable battery manufacturing process

G49D - - **P4**

G59D - - **P4**

How to order

G49D - **6** - **P02**

Ⓐ Model No.

Ⓑ Port size

Ⓒ Pressure display

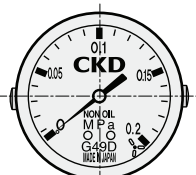
Code	Content
A Model No.	
G49D	
G59D	
B Port size *2	
6	R 1/8
8	R 1/4
C Pressure display [MPa] *1	
P02	0 to 0.2
P04	0 to 0.4
P10	0 to 1.0
P20	0 to 2.0

⚠ Precautions for model No. selection

*1: Displays other than an MPa display are custom order.

*2: NPT screws are available as custom order.

Dimensions



Pressure display: P02



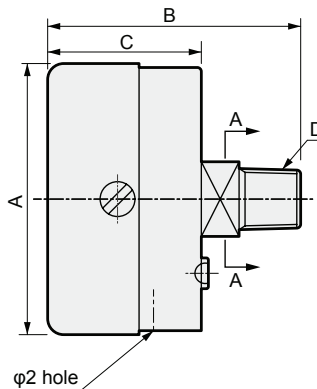
Pressure display: P04



Pressure display: P10



Pressure display: P20



Cross section A-A

Model No.	A	B	C	D	E
G49D-6	φ43.5	40.5	24.5	R 1/8	12
G49D-8	φ43.5	44	24.5	R 1/4	14
G59D-6	φ52	44.5	28	R 1/8	14
G59D-8	φ52	46.5	28	R 1/4	14
G49D-6-P6	φ42.8	43.5	27.5	R 1/8	12
G59D-8-P6	φ52	50.5	26.5	R 1/4	14

F.R.L
F (Filtr)
R (Reg)
L (Lub)
PresSW
Shutoff
SlowStart
FimResistFR
Oil-ProhR
MedPresFR
No Cu/
PTFE FRL
Outdrs FR
F.R.L
(Related)
CompFRL
LgFRL
PrecsR
VacF/R
Clean FR
ElecPneuR
AirBoost
SpdContr
Silncr
CheckV/
other
Jnt/tube
AirUnt
PresCompn
Mech/
ElecPresSw
ContactSW
AirSens
PresSW
Cool
AirFloSens/
Contr
WaterRtSens
TotAirSys
(Total Air)
TotAirSys
(Gamma)
RefrDry
DesicDry
HiPolymDry
MainFiltr
Dischrg
etc
Ending