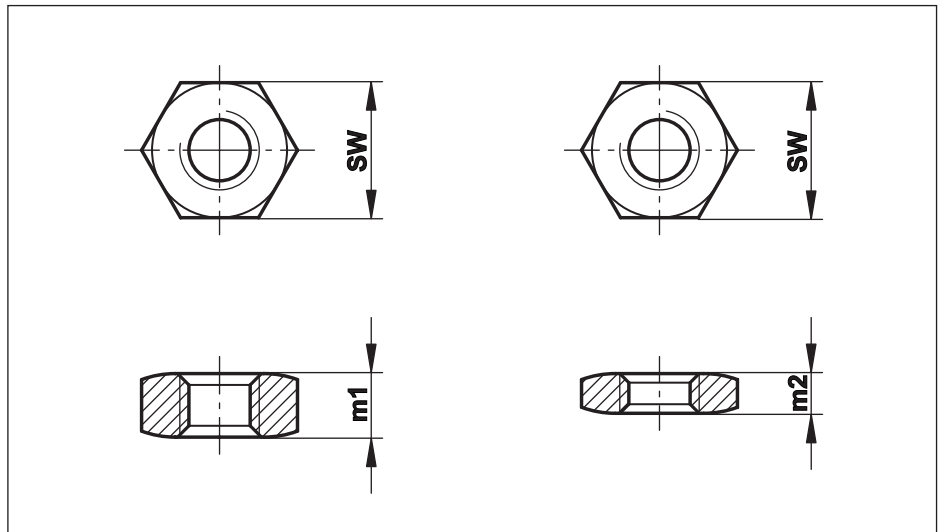


# Locking Nuts to DIN 934 / 439

Normal Form  
DIN 934 / ISO 4032

Narrow Form  
DIN 439 / 936

Locking Nuts with right  
or left hand thread.  
Steel zinc plated or  
stainless Steel A2



Nominal Size	Standard Thread Pitch	SW	Thread Pitch M...											ISO 4032/DIN 934		ISO 4036/DIN 439				
			x0,4	x0,5	x0,7	x0,8	x1,0	x1,25	x1,5	x1,75	x2,0	x2,5	x3,0	x4,0	m <sub>1</sub>	Weight g	m <sub>2</sub>	Weight g		
M 2	(M 2x0,4)	4,0	X														1,6	0,2	1,2	0,1
M 3	(M 3x0,5)	5,5		X													2,4	0,4	1,8	0,3
M 4	(M 4x0,7)	7,0			X												3,2	0,8	2,2	0,6
M 5	(M 5x0,8)	8,0				X											4,0	1,2	2,7	0,8
M 6	(M 6x1)	10,0					X										5,0	2,4	3,2	1,5
M 8	(M 8x1,25)	13,0					X	X									6,5	5,1	4,0	3,1
M 10	(M 10x1,5)	17,0					X	X	X								8,0	11,1	5,0	6,9
M 12	(M 12x1,75)	19,0						X	X	X							10,0	16,3	6,0	9,8
M 14	(M 14x2)	22,0									X						11,0	24,0	7,0	15,0
M 16	(M 16x2)	24,0								X		X					13,0	32,0	8,0	19,5
M 18	(M 18x2,5)	27,0								X							15,0	47,0	9,0	28,0
M 20	(M 20x2,5)	30,0								X			X				16,0	61,0	10,0	38,0
M 22	(M 22x2,5)	32,0								X							18,0	75,0	11,0	46,0
M 24	(M 24x3)	36,0										X					19,0	104,0	12,0	66,0
M 27	(M 27x3)	41,0										X					22,0	158,0	13,5	96,0
M 30	(M 30x3,5)	46,0										X					24,0	219,0	15,0	137,0
M 36	(M 36x4)	55,0										X		X			29,0	370,0	18,0	230,0
M 39	(M 39x4)	60,0												X			31,0	470,0	19,5	300,0
M 42	(M 42x4,5)	65,0										X		X			34,0	610,0	21,0	380,0
M 45	(M 45x4,5)	70,0												X			36,0	750,0	22,5	470,0
M 48	(M 48x5)	75,0										X					38,0	910,0	24,0	580,0
M 52	(M 52x5)	80,0													X		42,0	1130,0	26,0	700,0
M 56	(M 56x5,5)	85,0													X		45,0	1350,0	28,0	840,0
M 64	(M 64x6)	95,0													X		51,0	1850,0	32,0	1160,0

X) available ex stock, Standard Form only with standard thread in stock

**Materials:** Steel zinc plated, strength grade: 04 or better  
A2 is equivalent to stainless steel 1.4301, Aisi 304 and 1.4303, Aisi 305 or alternative material

**Thread:** Right hand or left hand threads

**Remarks:** Across-flats dimension SW, Weight, Width m1/m2 and Chamfer can differ from the table above and the DIN, because of different manufacturing methods  
Locking Nuts DIN 439 according to ISO 4036(without chamfer) or ISO 4035(with chamfer).  
Locking Nuts DIN 934 according to ISO 4032(without chamfer) or ISO 4033(with chamfer).

**Ordering:** e.g. Locking Nut M 10 Left Hand (Normal Form with standard thread) in stainless steel A2:

**Details:** Locking Nut DIN 934-M10-A2-Left Hand  
e.g. Locking Nut M 39x3 Right Hand (Narrow Form) in Steel, zinc plated:  
Locking Nut DIN 439-M39x3-04