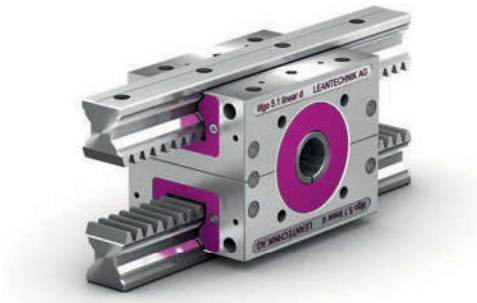

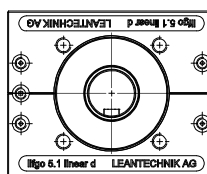
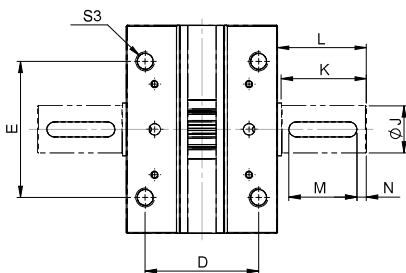
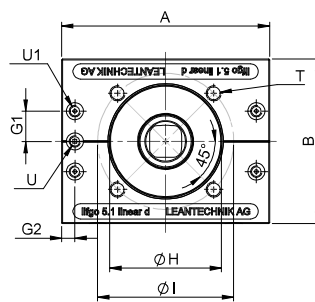
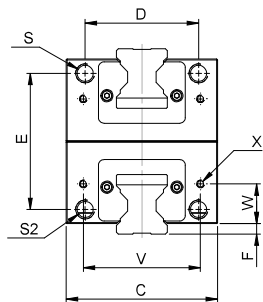
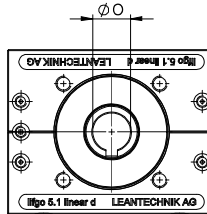
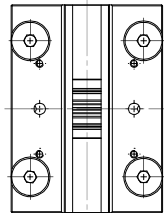


3.1.2.6 lifgo® linear double 5.0 – 5.3 • Dimension sheet



 Make sure that the article number refers to the correct pinion shaft version.





For the lifgo® linear double version, reinforcements or infeeds can be mounted on the gear racks.

lifgo® linear double	Unit	5.0	5.1	5.3	
A	mm	80	110	180	
B	mm	63	87	142	
C	mm	70	80	130	
D	mm	55	60	105	
E	mm	50	72	120	
F	mm	3,5	5,5	5	
G1	mm	7,5	16	21,5	
G2	mm	7	7	13	
Centering flange (if used, remove sealing ring)	H	mm	Ø 38,5 H7 ↓2	Ø 59 H7 ↓3	Ø 92 H7 ↓3
	I	mm	Ø 48	Ø 72	Ø 110
Key DIN 6885 P9	J	mm	Ø 14 h7	Ø 25 h7	Ø 42 h7
	K	mm	30	45	60
	L	mm	32	47	62
	M	mm	25	36	50
Key DIN 6885 P9	N	mm	2	5	5
	O	mm	Ø 10 H7	Ø 20 H7	Ø 35 H7
	S	mm	M8 ↓25 Ø 6,8 through	M10 ↓25 Ø 8,5 through	M12 ↓30 Ø 10,2 through
	S2	mm	M8 ↓11	M10 ↓14	M12 ↓24
	S3	mm	M8 ↓15	M10 ↓25	M12 ↓35
Lube hole	T	mm	M6 ↓8	M8 ↓10	M10 ↓20
Lube hole	U	mm	M6 ↓5	M6 ↓5	M6 ↓5
	U1	mm	M6 ↓5	M6 ↓5	M6 ↓5
	V	mm	58	62	100
	W	mm	18	21	43
	X	mm	M4 ↓8	M4 ↓8	M4 ↓8
Weight PW		kg	1,35	3,35	14,80
Weight ZA 1		kg	1,46	3,70	16,65
Weight ZA 2		kg	1,50	3,82	17,31
Weight PFN		kg	1,38	3,32	15,01

Article number	5.0	5.1	5.3
lifgo® linear double PVW	500 081	500 082	500 083
lifgo® linear double ZA 1	500 085	500 086	500 087
lifgo® linear double ZA 2	500 089	500 090	500 091
lifgo® linear double PFN	500 093	500 094	500 095