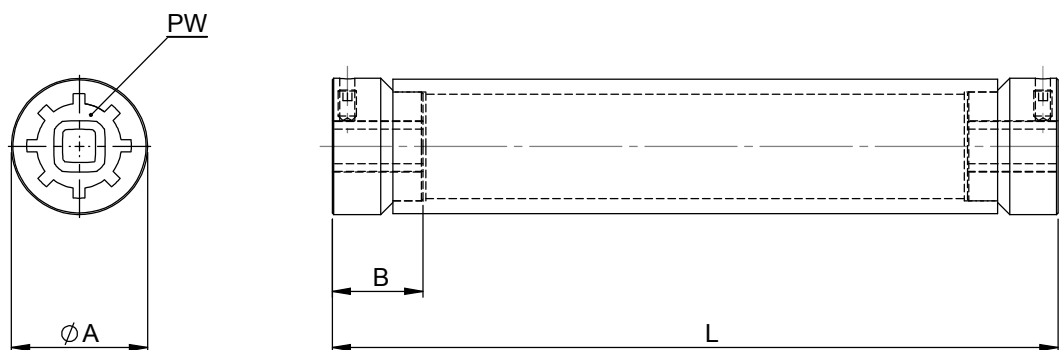


3.3.6 Rotational reinforcement • Dimension sheet

We recommend the use our rotational reinforcement in cases of large axis spacing or high torsional forces. They prevent asynchronous behavior in the lifting system due to twisting or torsion of the profile shafts.



! The profile shafts and rotational reinforcements are secured axially by compression ring screws. Please use short profile shafts as much as possible, always taking the insertion depth "B" into consideration.

Always add the length "L = _ _ _ _" to the article number.

Rotational reinforcement for lifgo® & lean SL®	Unit	5.0	5.1	5.3	
Insertion depth	A	mm	Ø 30	Ø 45	Ø 89
	B	mm	25	30	90
	L	mm		as per customer data	
Max. torque	Mt	Nm		see profile shaft	
Polar moment of inertia	Ip	mm ⁴	45850	245897	2804721
Principal moment of inertia	Ix, Iy	mm ⁴	22925	122948	1402360
Profile shaft	PW		PG 14	PG 20	KW 42
Weight		kg/m	1,86+0,20	4,63+0,51	11,90+5,53

Article number	lifgo® & lean SL®	5.0	5.1	5.3
Rotational reinforcement		500 478	500 479	500 480