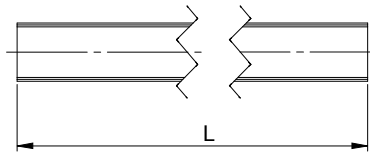
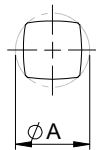


3.3.4 Profile shafts • Dimension sheets

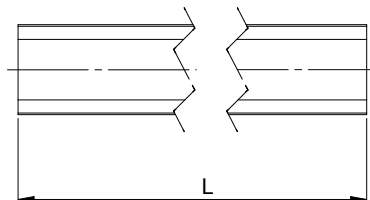
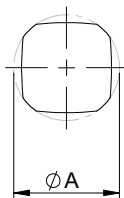
Profile shafts provide rotationally rigid connections between several gearboxes (PW version). They are inserted through the pinion shafts of the gearboxes to be connected. At the same time, the profile shaft ensures the synchronicity and alignment of the pinions of connected gearboxes.



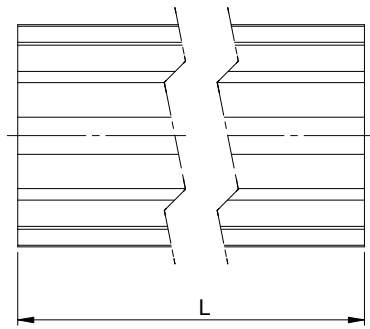
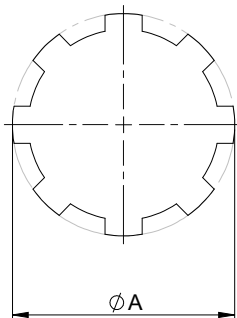
PG 14



PG 20



KW 42



! The pinion positions of two gearboxes remain synchronized for a gear rack position from 0° for “gearbox 1” to 90° for “gearbox 2”.

Always add the length “L = _ _ _ _” to the article number.

| Profile shaft for lifgo® & lean SL® | Unit | 5.0 | 5.1 | 5.3 | |
|--|--------|----------------------|---------|--------------|-----------|
| | | Polygon | Polygon | Spline shaft | |
| A | mm | Ø 14 | Ø 20 | Ø 42 | |
| L | mm | as per customer data | | | |
| Max. torque | Mt | Nm | 40 | 152 | 954 |
| Angle of twist | | °/m | 1 | 1 | 1 |
| Straightness | | mm/m | 0,3 | 0,3 | 0,3 |
| Polar moment of inertia | lp | mm ⁴ | 2140,29 | 11563,94 | 229252,02 |
| Principal moment of inertia | lx, ly | mm ⁴ | 1071,14 | 5781,97 | 114626,01 |
| Weight | | kg/m | 0,90 | 2,10 | 9,30 |

| Article number | lifgo® & lean SL® | 5.0 | 5.1 | 5.3 |
|----------------|-------------------|---------|---------|---------|
| Profile shaft | | 100 130 | 100 166 | 100 198 |