

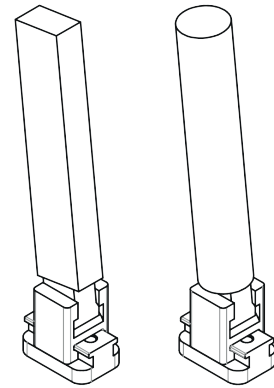
**ASTA PER ESTRAZIONE SOTTOSQUADRI**  
*UNDERCUT EJECTION BAR*  
 STANGE ZUM UNTERSCHNEIDUNGS AUSWERFEN

**CAT**

**Acciaio:** 1.2344  
**Steel:** 1.2344  
**Stahl:** 1.2344

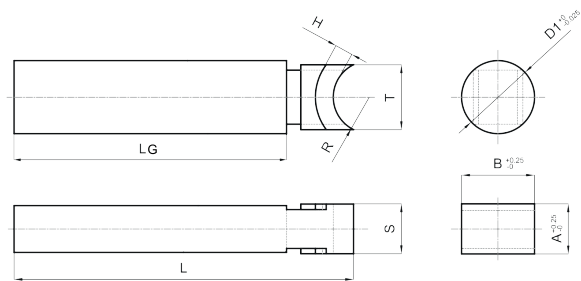
**Durezza:** 38-42 HRC  
**Hardness:** 38-42 HRC  
**Härte:** 38-42 HRC

**Specifiche:** Corpo Lavorabile - Guide Nitrate  
**Specifications:** Workable Core - Nitrited guiding  
**Spezifikationen:** Fräsbaren Kern - Leitung nitrierte



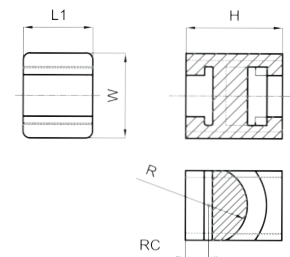
**CAT01**

A	B	D1	S	R	H	T	LG	L
10	10	-	10	10	5	10	237	250
15	15	-	10	10	5	15	235	250
10	20	-	10	10	5	15	235	250
20	10	-	10	10	5	10	237	250
15	30	-	10	10	5	15	385	400
30	15	-	10	10	5	15	385	400
20	20	-	10	10	5	15	385	400
-	-	15	10	10	5	10	237	250
-	-	10	10	10	5	10	237	250



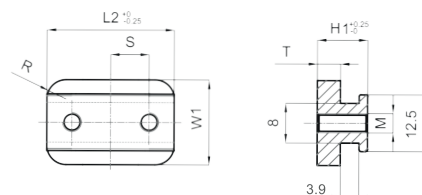
**CAT02**

W	L1	H	R	RC
22	18	25	10	6



**CAT03**

W1	L2	T	H1	R	M	S	CORSA/STROKE/HUB
22	33	6	13.1	5	5	10	10
22	52	6	13.1	5	5	15	30



**Esempio di ordinativo:**  
 Tondo: D1xLxCorsa  
 Quadro: AxBxLxCorsa

**Order example:**  
 Round: D1xLxStroke  
 Square: AxBxLxStroke

**Bestellbeispiel:**  
 Runde: D1xLxHub  
 Quadrat: AxBxLxHub