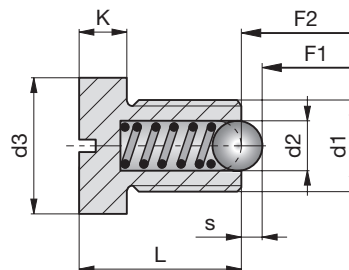


2

Federnde Druckstücke

Spring ejectors

Poussoirs à ressort

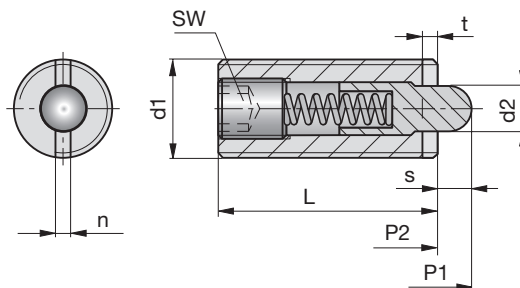
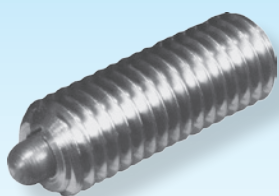


Z3153-

max. 250 °C
Mat.: 1.0718

d1	L	s	d2	d3	F1 (N)	F2 (N)	K
M8	16,5	1,5	4,5	13	18	31	5,5
M12	22	2,5	8	18	26	49	7

Z3153-d1



Z3156-

max. 250 °C
Mat.: 1.4305

d1	L	d2	s	t	n	SW	P1 (N)	P2 (N)
M5	18	2,4	2,3	0,8	1,2	1,5	7	20
M6	20	2,7	2,5	0,9	1,3	2,0	7	20
M8	22	3,5	3,0	1,4	1,5	2,5	9	35
M10	22	4,0	3,0	1,4	1,5	3,0	9	35
M12	28	6,0	4,0	2,0	2,7	4,0	15	55
M16	32	7,5	5,0	2,5	3,2	5,0	45	100
M20	40	10,0	7,0	3,0	3,5	6,0	70	140

Z3156-d1

