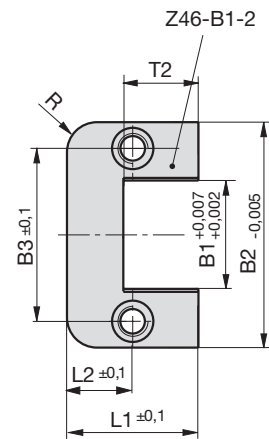
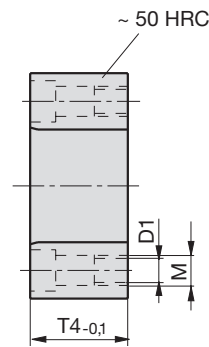
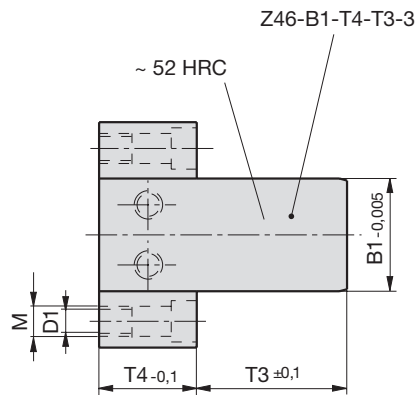
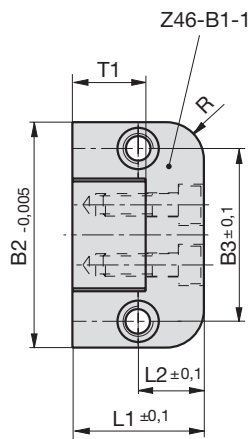
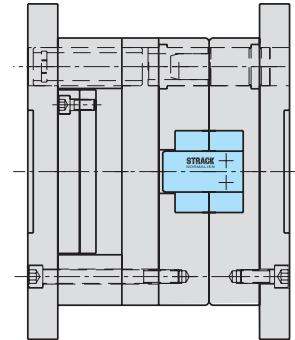
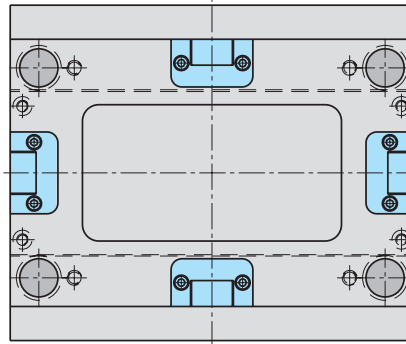


Rechteckführungen

Square guide bars

Guidages rectangulaires

1



Z46-

Mat.: 1.2343
DLC

Z46-B1-T4-T3



Rechteckführungen Z46 auf Anfrage:

- plasmanitriert
- Material 1.2379

Square guide bar Z46 on request:

- plasma-nitrided
- material 1.2379

Guidages rectangulaires Z46 sur demande:

- nitrurée au plasma
- matériel 1.2379

B1	T4	T3	L1	B2	D1	M	L2	B3	T1	T2	R
16	20	20	22	45	6,8	M8	11	30	11,5	12	8
	20	40	22	45	6,8	M8	11	30	11,5	12	8
30	26	40	35	60	6,8	M8	17,5	46	19,5	20	10
	26	63	35	60	6,8	M8	17,5	46	19,5	20	10
48	36	32	46	100	10,3	M12	23	74	25,5	26	12,5
	36	50	46	100	10,3	M12	23	74	25,5	26	12,5
	36	63	46	100	10,3	M12	23	74	25,5	26	12,5
	36	80	46	100	10,3	M12	23	74	25,5	26	12,5
	36	100	46	100	10,3	M12	23	74	25,5	26	12,5
77	56	50	60	150	14	M16	30	114	35,5	36	16
	56	71	60	150	14	M16	30	114	35,5	36	16
	56	100	60	150	14	M16	30	114	35,5	36	16
	56	120	60	150	14	M16	30	114	35,5	36	16