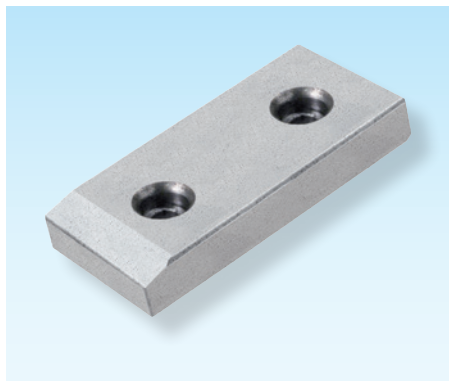


1

**Gleitplatten VDI 3357,
selbstschmierend, VW-Norm 39D 954**

**Wear plates VDI 3357,
self-lubricating, VW-norm 39D 954**

**Plaques de frottement VDI 3357,
autolubrifiantes, Norme de VW 39D 954**

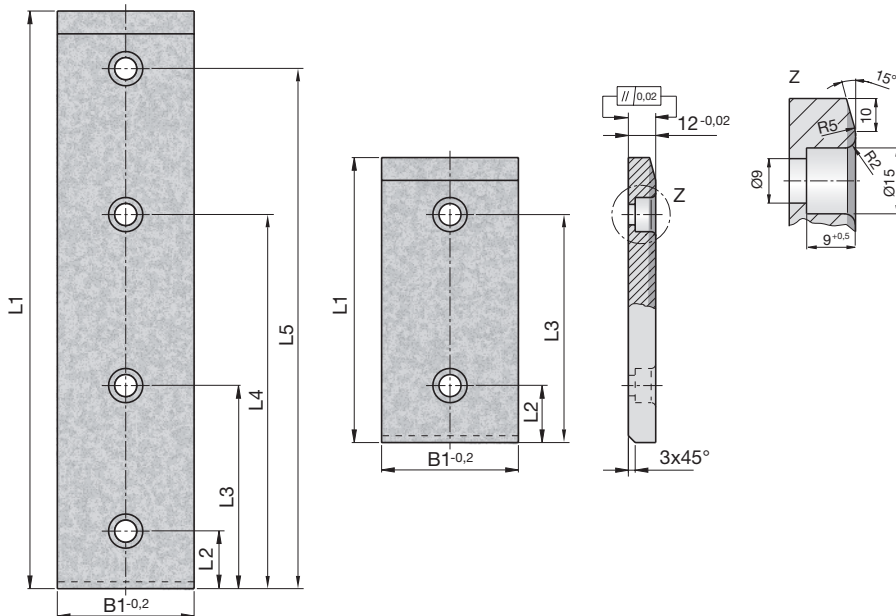


SN3877 -

Mat.: SNS Sintermetall/
Sintered metal/Métal
fritté



SN3877-B1-L1



B1	L1	L2	L3	L4	L5	Bohrungen Drillings Perçages	B1	L1	L2	L3	L4	L5	Bohrungen Drillings Perçages
30	80	25	55	-	-	2	60	80	25	55	-	-	2
30	100	25	75	-	-	2	60	100	25	75	-	-	2
30	125	25	100	-	-	2	60	125	25	100	-	-	2
30	160	25	135	-	-	2	60	160	25	135	-	-	2
30	200	25	175	-	-	2	60	200	25	175	-	-	2
40	80	25	55	-	-	2	80	80	25	55	-	-	2
40	100	25	75	-	-	2	80	100	25	75	-	-	2
40	125	25	100	-	-	2	80	125	25	100	-	-	2
40	160	25	135	-	-	2	80	160	25	135	-	-	2
40	200	25	175	-	-	2	80	200	25	175	-	-	2
50	80	25	55	-	-	2							
50	100	25	75	-	-	2							
50	125	25	100	-	-	2							
50	160	25	135	-	-	2							
50	200	25	175	-	-	2							
50	250	25	85	165	225	4							
50	300	25	105	195	275	4							
50	350	25	125	225	325	4							
50	400	25	145	255	375	4							