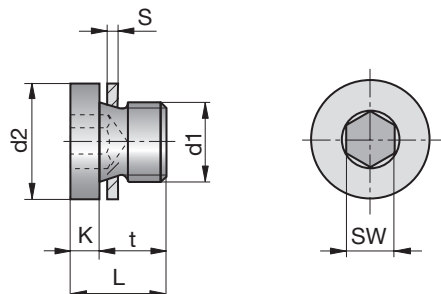


Verschlusschrauben

Taper pressure plugs

Bouchons fileté conique



Z7744-

Mat.: MS
DIN 908



Z7744-Type

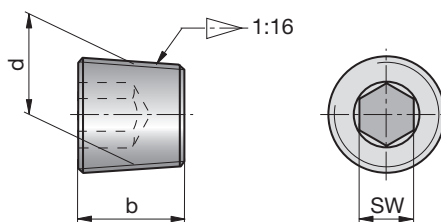


Type	d1	d2	L	K	t	S	SW
1	M10 x 1	14	11	3	8	1,5	5
2	G 1/8 A	14	11	3	8	1,5	5
3	G 1/4 A	18	15	3	12	1,5	6
4	G 3/8 A	22	15	3	12	2,0	8
5	G 1/2 A	26	18	4	14	2,0	10

Verschlusschrauben

Taper pressure plugs

Bouchons fileté conique



Z7746-

Mat.: MS
DIN 906



Z7746-Type



Type	d	b	SW
1	M8 x 0,75	8	4
2	M10 x 1	8	5
3	R 1/8	8	5
4	R 1/4	10	7
5	R 3/8	10	8
6	R 1/2	10	10