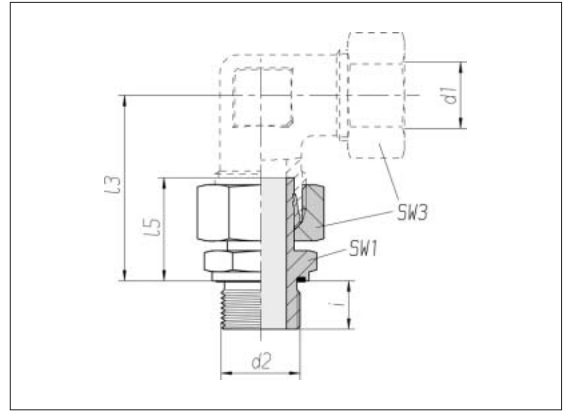


# Straight stud standpipe adapters

Thread:  
metric fine thread,  
straight

Sealed with PEFLEX seal

Tube socket pre-assembled



Series Tube OD d1	Pressure	d2	SW1	SW3	l3	l5	i	Nm -10 %	kg/100 approx.	Order No.
L 6	PN 315	M 10 x 1	14	14	36.5	24.5	8	15	2.3	0 1 74 80 20 07*
L 8	PN 315	M 12 x 1.5	17	17	40.5	26.5	12	25	3.9	0 1 74 81 20 07
L 10	PN 315	M 14 x 1.5	19	19	42.5	27.5	12	50	4.9	0 1 74 82 20 07
L 12	PN 315	M 16 x 1.5	22	22	47.5	30.5	12	70	6.8	0 1 74 83 20 07
L 15	PN 315	M 18 x 1.5	24	27	52.5	31.5	12	90	9.8	0 1 74 84 20 07
L 18	PN 315	M 22 x 1.5	27	32	55	31.5	14	130	14.0	0 1 74 85 20 07
L 22	PN 160	M 26 x 1.5	32	36	60	32.5	16	180	19.4	0 1 74 86 20 07
L 28	PN 160	M 33 x 2	41	41	65.5	35	18	230	27.0	0 1 74 87 20 07
L 35	PN 160	M 42 x 2	50	50	77	42.5	20	330	45.3	0 1 74 88 20 07
L 42	PN 160	M 48 x 2	55	60	86.5	46.5	22	500	62.7	0 1 74 89 20 07
S 6	PN 630	M 12 x 1.5	17	17	43	27	12	50	4.3	0 1 74 90 20 07
S 8	PN 630	M 14 x 1.5	19	19	46.5	29.5	12	60	6.0	0 1 74 91 20 07
S 10	PN 630	M 16 x 1.5	22	22	49.5	32	12	80	8.6	0 1 74 92 20 07
S 12	PN 630	M 18 x 1.5	24	24	55.5	34	12	90	10.9	0 1 74 93 20 07
S 14	PN 630	M 20 x 1.5	27	27	58.5	36.5	14	130	14.6	0 1 74 94 20 07
S 16	PN 400	M 22 x 1.5	27	30	61.5	37	14	130	16.7	0 1 74 95 20 07
S 20	PN 400	M 27 x 2	32	36	69.5	43	16	200	25.4	0 1 74 96 20 07
S 25	PN 400	M 33 x 2	41	46	78	48	18	250	48.6	0 1 74 97 20 07
S 30	PN 400	M 42 x 2	50	50	86.5	51	20	500	66.2	0 1 74 98 20 07
S 38	PN 315	M 48 x 2	55	60	101	60	22	600	93.3	0 1 74 99 20 07

\* Sample product code, see:  
EVGE06LMED