

## Adapter plate

for keyless chuck D50

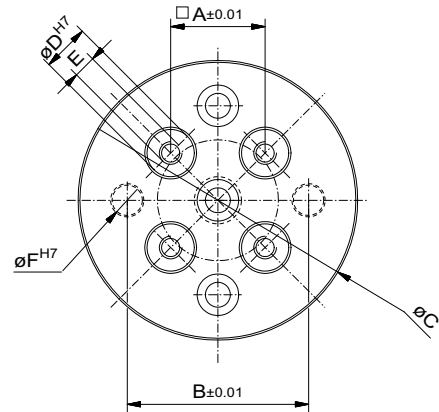
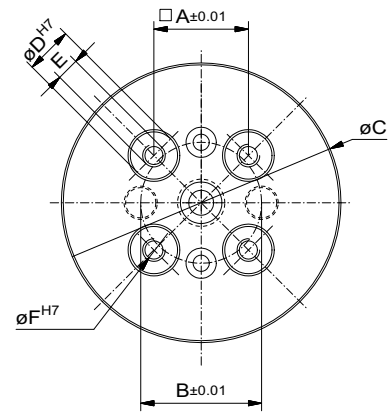
Nr.	A	B	C	D	E	F	
56162	25	32	74	12,5	M6	8	123



for keyless chuck D80

Nr.	A	B	C	D	E	F	
56161	25	48	74	12,5	M6	8	123

Adapter plates also available including suitable connection elements  
 D50 – **97893**  
 D80 – **97892**



**Application example:**  
 Keyless chuck mounted on a rotary plate and Alufix Classic bar



**ALUFIX CLASSIC** elements can be anodized in different colours. The colour natural is standard, black (-1) is available as an alternative. Other colours on request.

